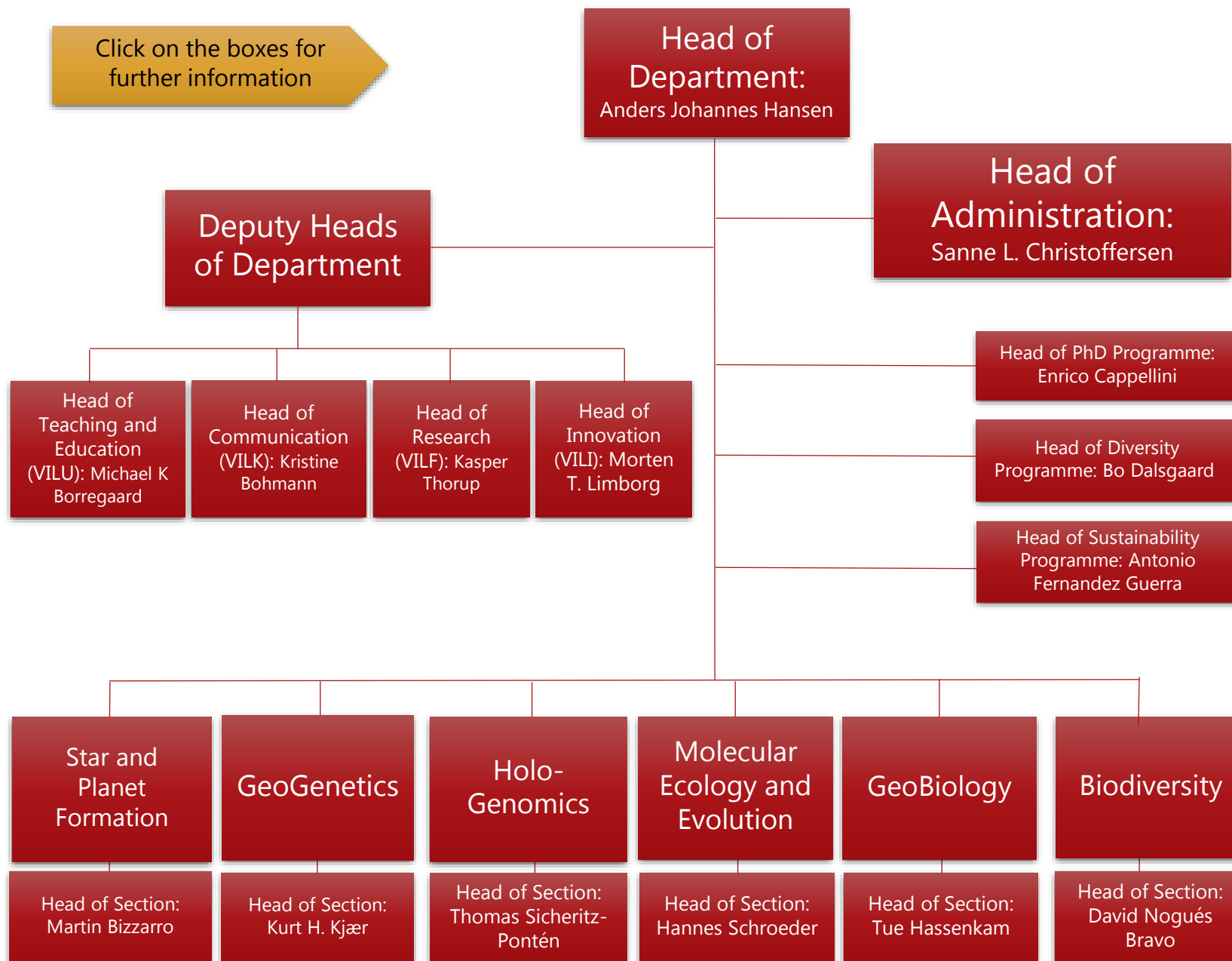


Management

Sections



Click on the boxes for further information

- Center for Star and Planet Formation (StarPlan)
- Lundbeck Foundation Centre for Disease Evolution (GeoGen)
- Center for Evolutionary Hologenomics (HoloGen)
- Center for Macroecology, Evolution and Climate (BioDiv)
- Villum Center for Global Mountain Biodiversity (BioDiv)
- Research Centre on Ocean, Climate and Society (BioDiv)
- Center for Geo-enhancing Biological Productivity with Glacial Rock Flour (GeoBio)
- Center for Ancient Environmental Genomics (GeoGen)
- Ancient Environmental Genomics Initiative for Sustainability (AEGIS)
- UCPH Sustainability Science Centre – anchored in BioDiv
- IPBES in Denmark – anchored in BioDiv
- Archaeoscience
- GeoGenetics Sequencing Core

Centers

Core Facilities