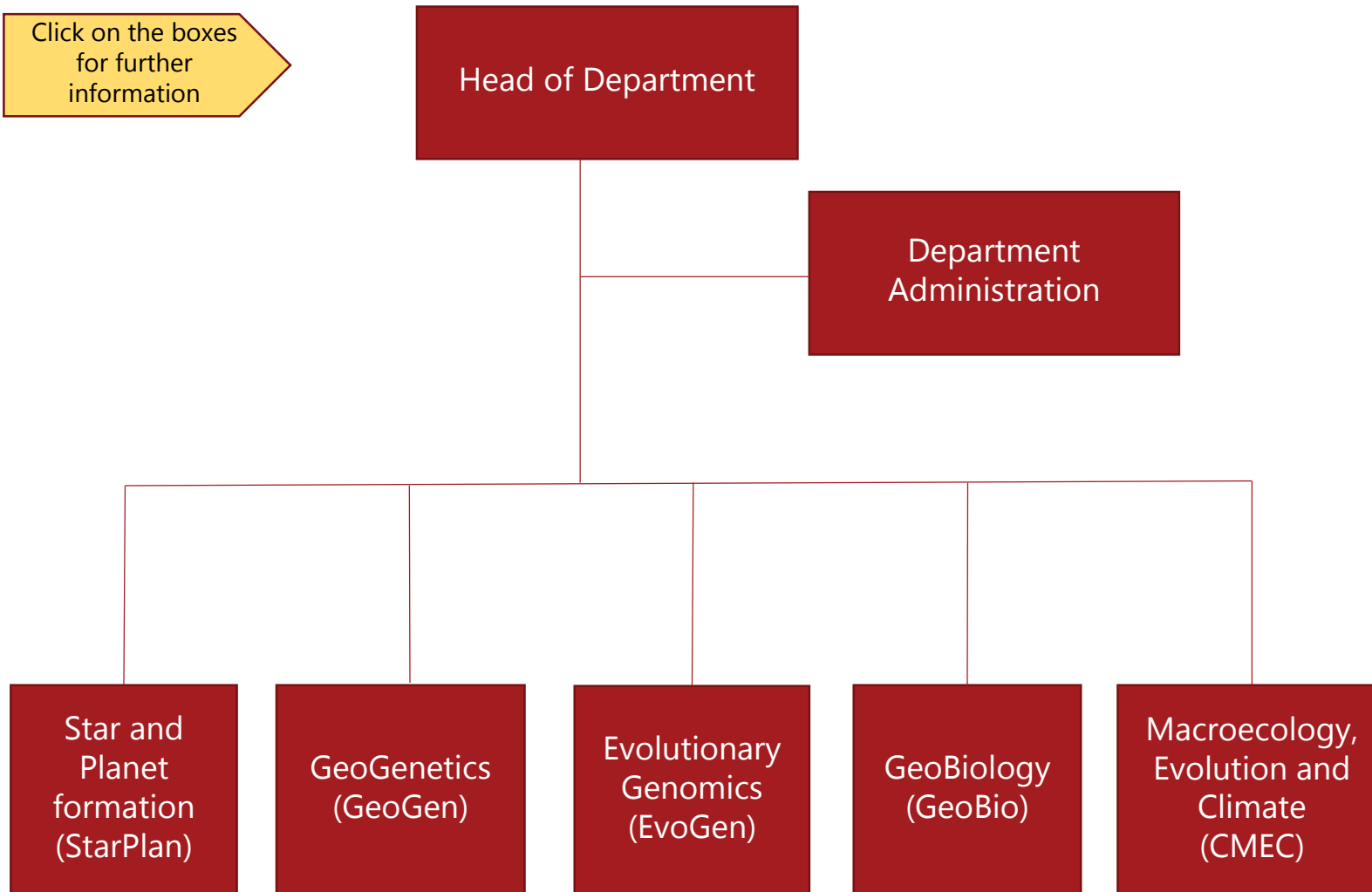


Management

Sections

Click on the boxes for further information



- Center for Star and Planet formation (StarPlan)
- Lundbeck Foundation Centre for Disease Evolution (GeoGen)
- Center for Evolutionary Hologenomics (EvoGen)
- Center for Macroecology, Evolution and Climate (CMEC)
- Villum Foundation Center for Global Mountain Diversity (CMEC)
- Dansk-Islandsk Hav-forskningscenter (CMEC)
- Sustainability Science Center – anchored in CMEC
- IPBES in Denmark – anchored in CMEC
- Archaeoscience
- National High-Throughput DNA Sequencing Centre

Centers

Core Facilities