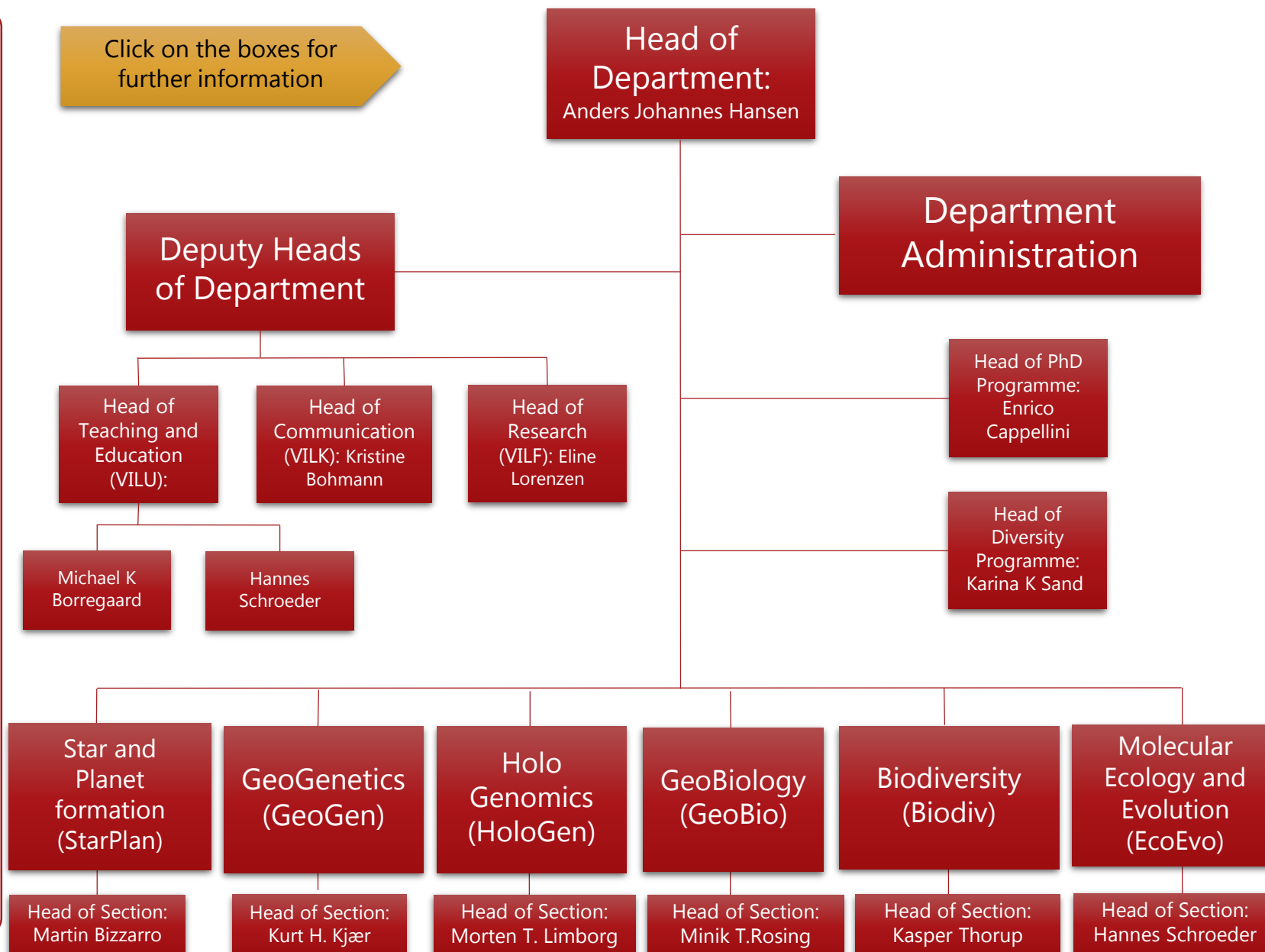


Management

Sections



Click on the boxes for further information

- Center for Star and formation (StarPlan) Planet
- LundbeckFoundation Centre for Disease Evolution (GeoGen)
- Center for Evolutionary Hologenomics (EvoGen)
- Center for Macroecology, Evolution and Climate (CMEC)
- Villum Foundation Center for Global Mountain Diversity (CMEC)
- Dansk-Islandsk Havforskningscenter (CMEC)
- Sustainability Science Center – anchored in CMEC
- IPBES in Denmark – anchored in CMEC
- Archaeoscience
- National High-Throughput DNA Sequencing Centre

Centers

Core Facilities